



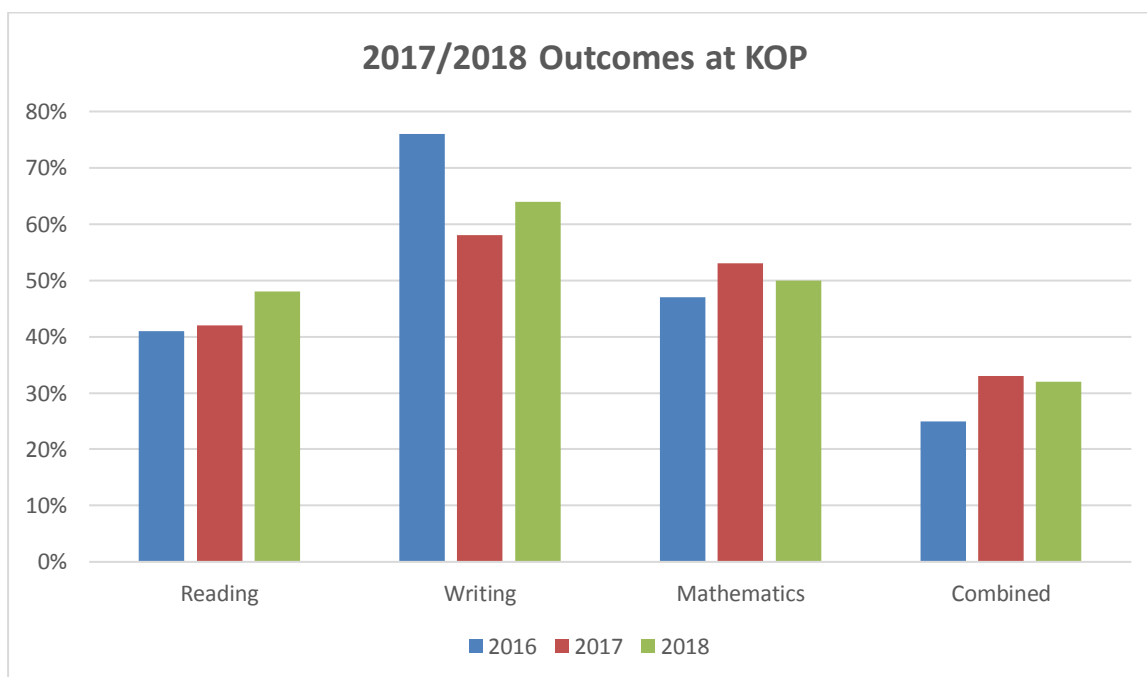
End of KS2 (Year 6) 2017/2018 Data Report

Cohort

<u>Group</u>	<u>Number of Pupils</u>
Whole cohort	104
Male (M)	59
Female (F)	45
Pupil Premium (PP)	39
Free School Meals (FSM)	20
Special Educational Needs and/or Disabilities (SEND)	10
English as an Additional Language (EAL)	53

Attainment (Number of pupils achieving ARE – Age Related Expectation)

	<u>Reading</u>	<u>Writing</u>	<u>Mathematics</u>	<u>Reading, Writing and Mathematics</u>
KOP 2017/2018	48%	64%	50%	32%
National 2018 (provisional)	75%	78%	76%	64%
KOP 2016/2017	42%	58%	53%	33%
National 2017	71%	76%	75%	61%
KOP 2015/2016	41%	76%	47%	25%
National 2016	66%	74%	70%	53%

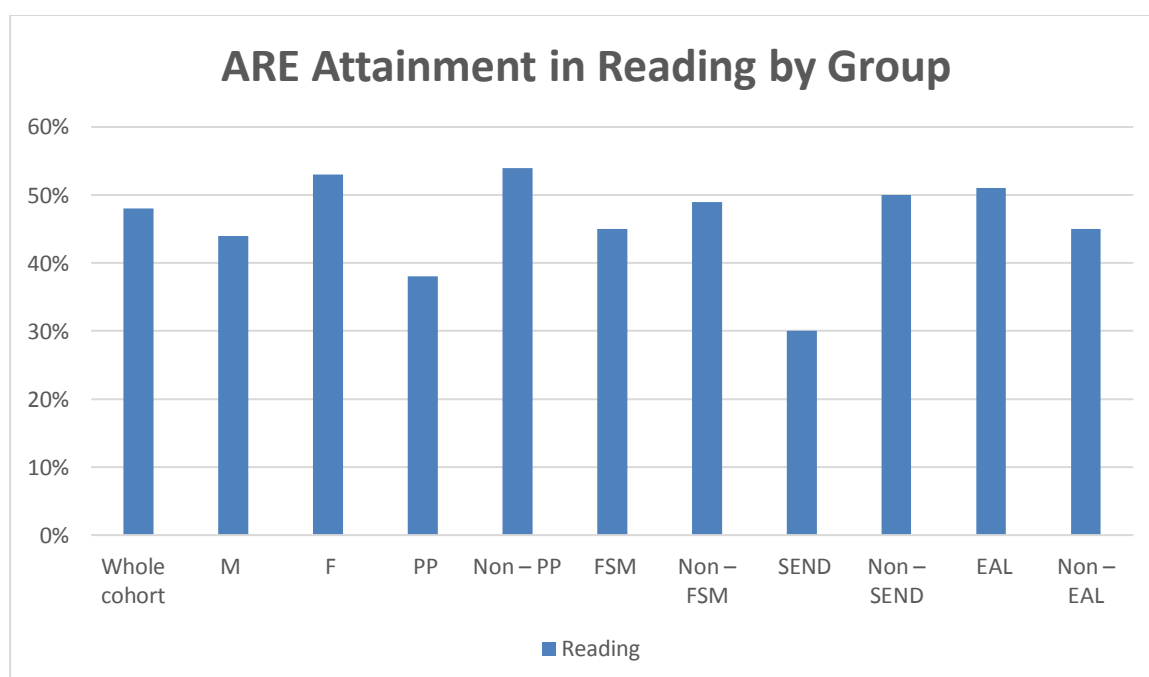


Progress

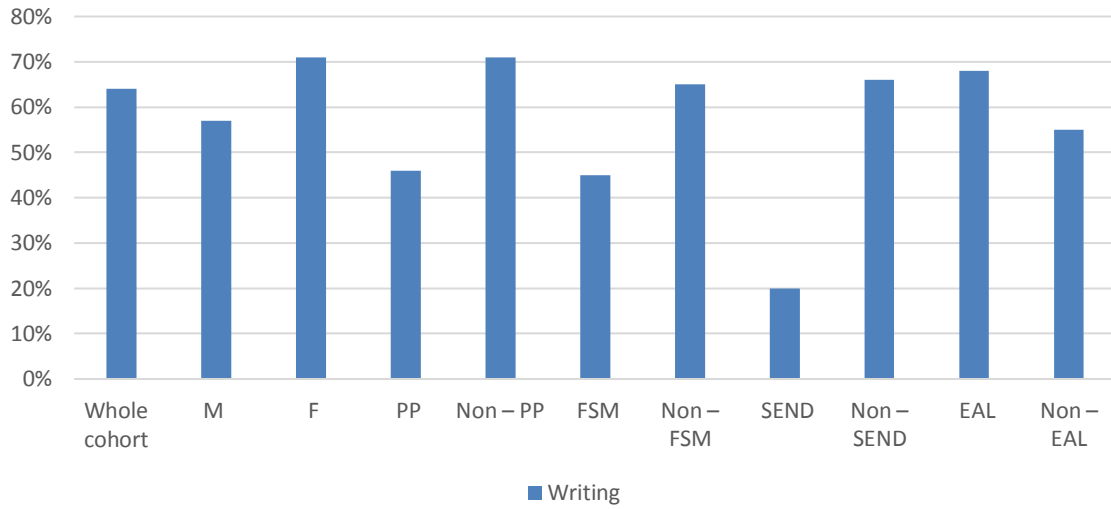
KS1 End of 2014 Outcome	Number of pupils achieving KS2 ARE – (Age Related Expectation) 2018		
	Reading	Writing	Mathematics
W	0% (0/1)	0% (0/1)	N/A
1	38% (3/8)	36% (4/11)	40% (2/5)
2C	25% (2/8)	56% (5/9)	0% (0/8)
2B	31% (5/16)	39% (11/28)	37% (7/19)
2A	45% (15/33)	93% (25/27)	52% (22/42)
3	76% (22/29)	100% (19/19)	95% (20/21)

Attainment (Number of pupils achieving ARE by group)

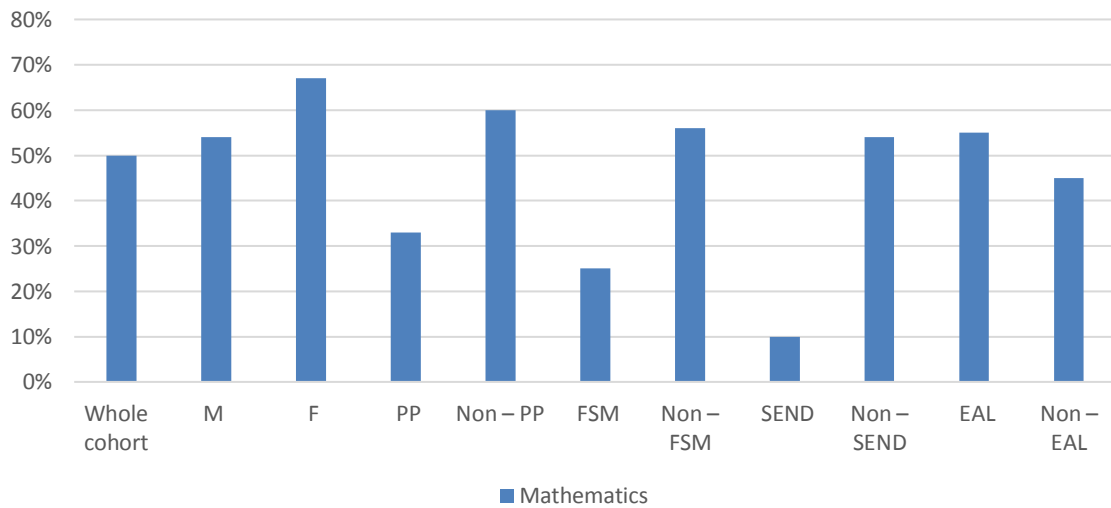
	Reading	Writing	Mathematics	Combined
Whole cohort	48%	64%	50%	32%
M	44%	57%	54%	31%
F	53%	71%	67%	33%
PP	38%	46%	33%	13%
Non – PP	54%	71%	60%	43%
FSM	45%	45%	25%	15%
Non – FSM	49%	65%	56%	36%
SEND	30%	20%	10%	10%
Non – SEND	50%	66%	54%	34%
EAL	51%	68%	55%	38%
Non – EAL	45%	55%	45%	25%

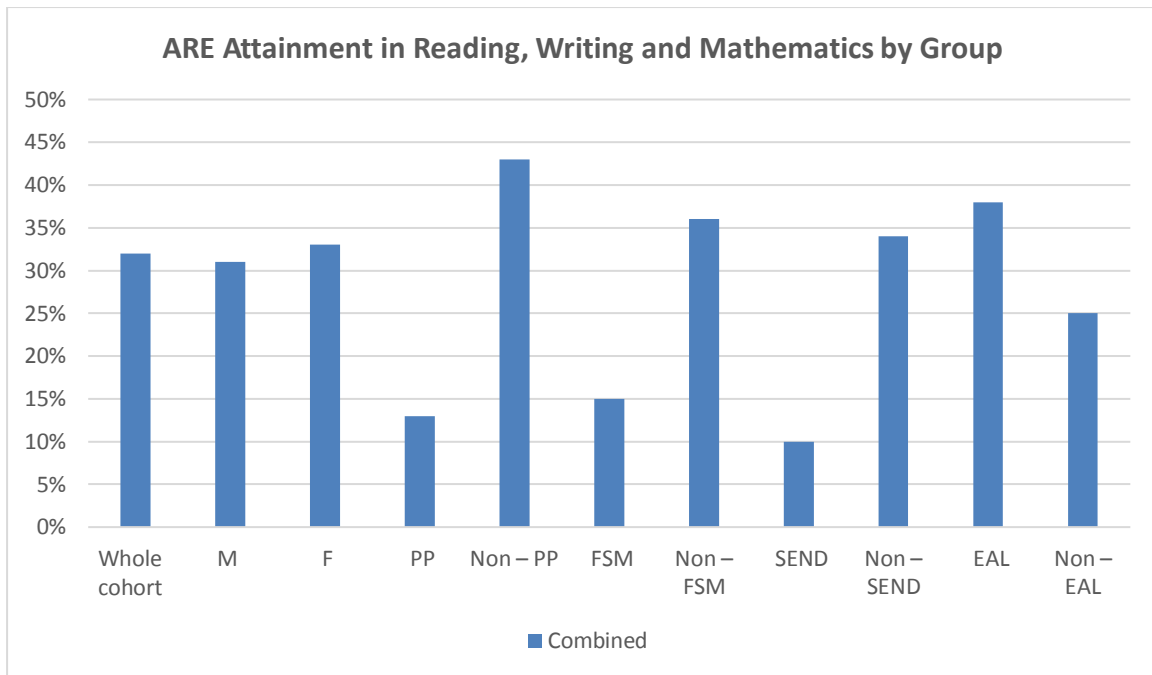


ARE Attainment in Writing by Group



ARE Attainment in Mathematics by Group





Summary

- The number of pupils achieving ARE in reading at the end of KS2 at KOP is steadily increasing each year.
- The number of pupils achieving ARE in writing at the end of KS2 at KOP has increased from last year.
- The number of pupils achieving ARE in mathematics at the end of KS2 at KOP has decreased from 2017, but this is still an improvement upon 2016.
- The number of pupils achieving ARE in reading, writing and mathematics at the end of KS2 at KOP has decreased from 2017, but this is still an improvement upon 2016.
- Disadvantaged groups are currently underperforming when compared to their peers, except for EAL children.